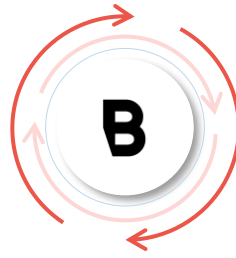


About Bellecapital

Wealth and asset management services for private clients and institutions

Offices in Zurich, Lausanne and London

FINMA-, SEC-, FCA regulated

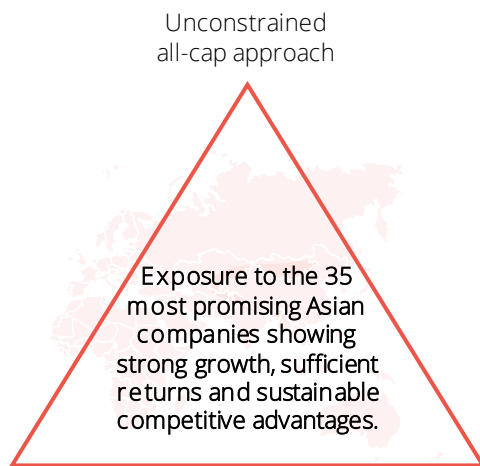


USD 6.0 bn AuM

Over 60 employees out of which 10 are dedicated investment specialists

Employee owned

Why invest with us?



Long-standing network with brokers, analysts and local partners

Investing in Asia since 1997



Xinyue Hou, CAIA
Portfolio manager



Andreas Kringlen, CFA
Portfolio manager

Our portfolio managers boast many years of investment experience in emerging markets and both hold a Master in Banking and Finance from the University of St. Gallen.

Their expertise is complemented by frequent travels to Asia, an extensive network of local sources and our Vietnamese research partner, Endurance Capital.

Why invest in Asia?



High economic growth rates

Asia's GDP grew by 5.3% in 2024 and is projected to grow by 5.1% in 2025.



Demographic advantages

Asia's median age is 32.1 with a population of 4.8 bn (59% of the world population).



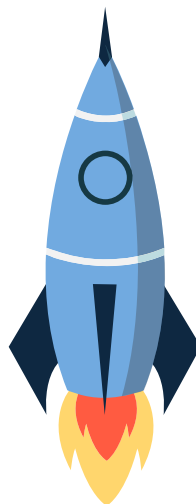
Rising middle class

The middle-class population in Asia is expected to increase from 1.38 billion people in 2015 to 3.49 billion people by 2030.



Rapid urbanization

East Asia is the world's most rapidly urbanizing region with an average annual urbanization growth rate >0.5%.



Why invest in Asian companies?

Local understanding

Many Asian companies have a deeper understanding of local client segments and markets, allowing them to leverage this insight across the entire value chain for a competitive advantage.

01

Undervalued opportunities

Many Asian stocks trade at lower valuations than their Western counterparts, despite strong fundamentals.

02

Innovation and technology leadership

Countries such as China, South Korea and Taiwan dominate in semiconductors, AI and EV technology.

03

This document is for marketing purposes. Please read the current sales prospectus and the KID before entering in any transaction. The only basis for the purchase of a fund are the Key Information Document (KID), the current Sales Prospectus with the Management Regulations or the articles of incorporation, the most recently published and audited Annual Report and the most recently published unaudited Semi-Annual Report, which can be obtained free of charge in German language from IPConcept (Luxembourg) S.A. (société anonyme), 4, rue Thomas Edison L-1445, Strassen, Luxembourg (see also https://www.ipconcept.com/ipc/en/funds_overview.html). Risks can be found in the Sales Prospectus. The Sales Prospectus and the KIDs must be made available to the investor prior to purchase. The tax treatment depends on the individual circumstances of each investor. This marketing communication is for information purposes only and does not constitute an offer to buy or sell fund units. In particular, the recipient is advised to check the information with regard to its compatibility with his or her own personal circumstances, legal, regulatory, tax and other consequences, if necessary with the assistance of an advisor. Please refer to the current sales prospectus for information on opportunities and risks. No assurance can be given that the investment objectives will be achieved. This promotional communication is addressed exclusively to interested parties in the countries in which the aforementioned funds are authorised for public distribution.

The Fund was established under Swiss law and is authorised for distribution in Switzerland, Liechtenstein and Germany. The Fund may not be publicly offered for sale in the United States of America ("USA") or for the benefit of US persons. The Management Company may decide to discontinue the arrangements it has made for the distribution of the units of its collective investment undertakings in accordance with Article 93a of Directive 2009/65/EC. Further information on investor rights in English <https://www.ipconcept.com/ipc/en/investor-information.html> and German language <https://www.ipconcept.com/ipc/de/anlegerinformation.html> can be found on the Management Company's website (www.ipconcept.com).

For investors in Switzerland: The Fund management Company is IPConcept (Schweiz) AG, Bellerivestrasse 36, P.O. Box, CH-8008 Zurich, the paying agent is DZ PRIVATBANK (Schweiz) AG, Bellerivestrasse 36, P.O. Box, CH-8008 Zurich and the custodian is DZ PRIVATBANK (Schweiz) AG, Bellerivestrasse 36, P.O. Box, CH-8008 Zurich. The Prospectus, the Key Investor Information Document and the Annual and Semi-Annual Reports may be obtained free of charge from the Fund management Company and the custodian. Past performance, simulations or forecasts are no reliable indicator of future performance. The gross performance according to the BVI method does not take into account the costs charged on the issue and redemption of units (issue and redemption premium) and fees incurred during the holding period (e.g. transaction costs). If an investor wishes to purchase units for € 1,000, he must pay € 1,030 with an issue premium of 3 %. The investor may incur securities account costs and other costs (e.g. custody or safekeeping costs) which reduce the performance. It should be noted that the value of the acquired units may fluctuate due to fluctuations in the investments in the fund and the listing of the securities. The fund exhibits increased volatility due to the composition of its portfolio or the portfolio management techniques used, i.e. the unit price may be subject to considerable upward and downward fluctuations even within short periods of time. Furthermore, in the case of foreign currencies, the return may rise or fall as a result of currency fluctuations.